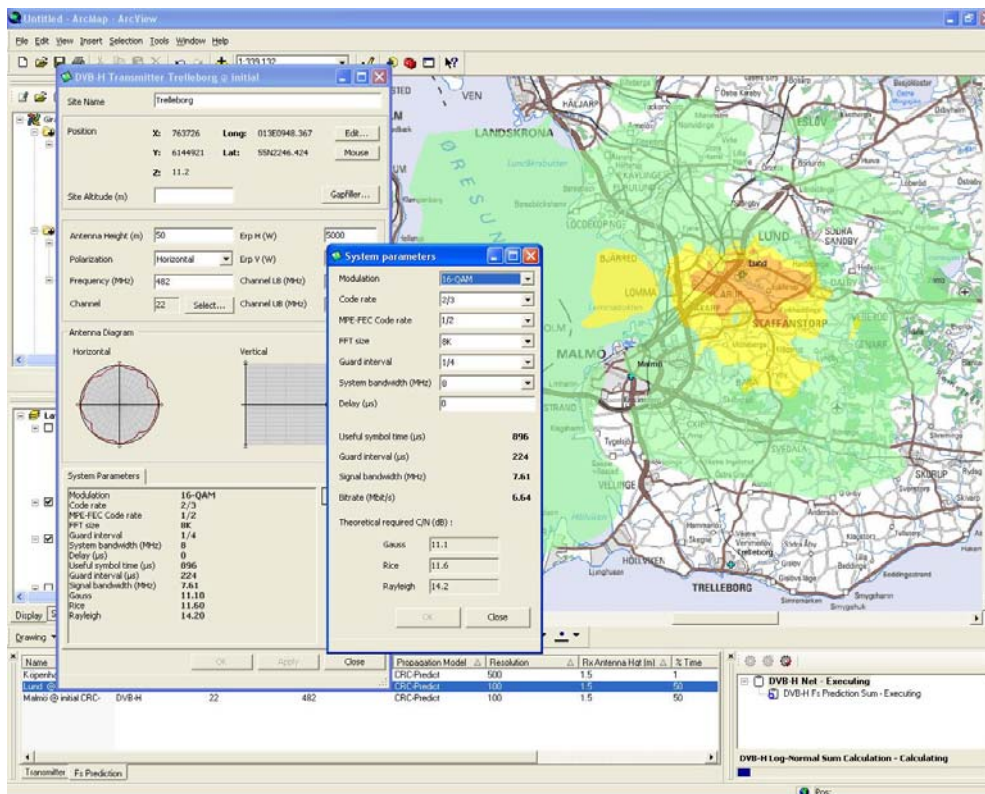


GIRAPLAN® Network Planning Module



GENERAL

The GiraPlan® Network Planning Module offers a complete coverage planning environment for your broadcast and Mobile TV network, supporting technologies such as DVB-T, DVB-H, T-DAB, T-DMB, ISDB-T, FM and analogue TV.

To support the special requirements of digital broadcasting and mobile TV network planning, GiraPlan® is equipped with important functionalities such as support of the GE-06 Plan and gap filler planning.

By developing our software on top of the most advanced and complete GIS-system (ESRI's ArcGIS) ProGira offers a flexible system for both advanced network planning and GIS. GiraPlan® has a modern graphical user interface and uses an efficient database management system which supports version control of transmitter data.

The Network Planning Module is one of the main modules in the GiraPlan® software suite. Other modules to support you in the network planning process are: Frequency Planning Module and Network Verification Module.



PRODUCT FEATURES

- SFN and MFN network planning (SFN gain and self-interference calculations)
- External interference calculations
- Several signal summation algorithms such as Power Sum, k-LNM and Schwartz and Yeh
- Several propagation prediction models such as CRC-Predict, ITU-R P.1546 and ITU-R P.526
- Monte Carlo simulations
- Coverage probability analysis and optimisation tool
- User definable protection ratios
- Receiver synchronization modelling
- Population coverage
- GE-06 Plan support

CONTACT DETAILS

Contact us at info@progira.com or on phone +46 920 75 050.
More information about ProGira and our products at www.progira.com

*Trademarks provided under license from ESRI

PROGIRA®
RADIO COMMUNICATION