

PROGIRA®

Release notes PROGIRA® plan
7.0.1

3rd July 2019

Luleå Science Park 2

SE-977 75 Luleå, SWEDEN

www.progira.com

Table of Contents

1	General/Introduction	3
2	Base Module	3
2.1	General	3
2.2	Job list	3
2.3	Tx.....	4
2.4	Export to ITU format.....	4
2.5	Create distance contour	4
2.6	Allotments/SFN.....	5
2.7	Layout view.....	5
3	Frequency planning module	6
3.1	Frequency scan	6
4	Network planning module	6
4.1	ATSC sum	6

1 General/Introduction

This document present updates in PROGIRA® plan version 7.0.1. This is an upgrade which consists of mainly changes and bug fixes. If you should need further information regarding any of the modifications, please contact support@progira.com.

2 Base Module

2.1 General

NEW: Support for ArcGIS Desktop 10.7.1

NEW: Support for ArcGIS Pro 2.4.0. Known limitations:

- Area- and population coverage function

FIXED: Improved PROGIRA® plan installer. You should now be able to install a new version without first uninstalling previous.

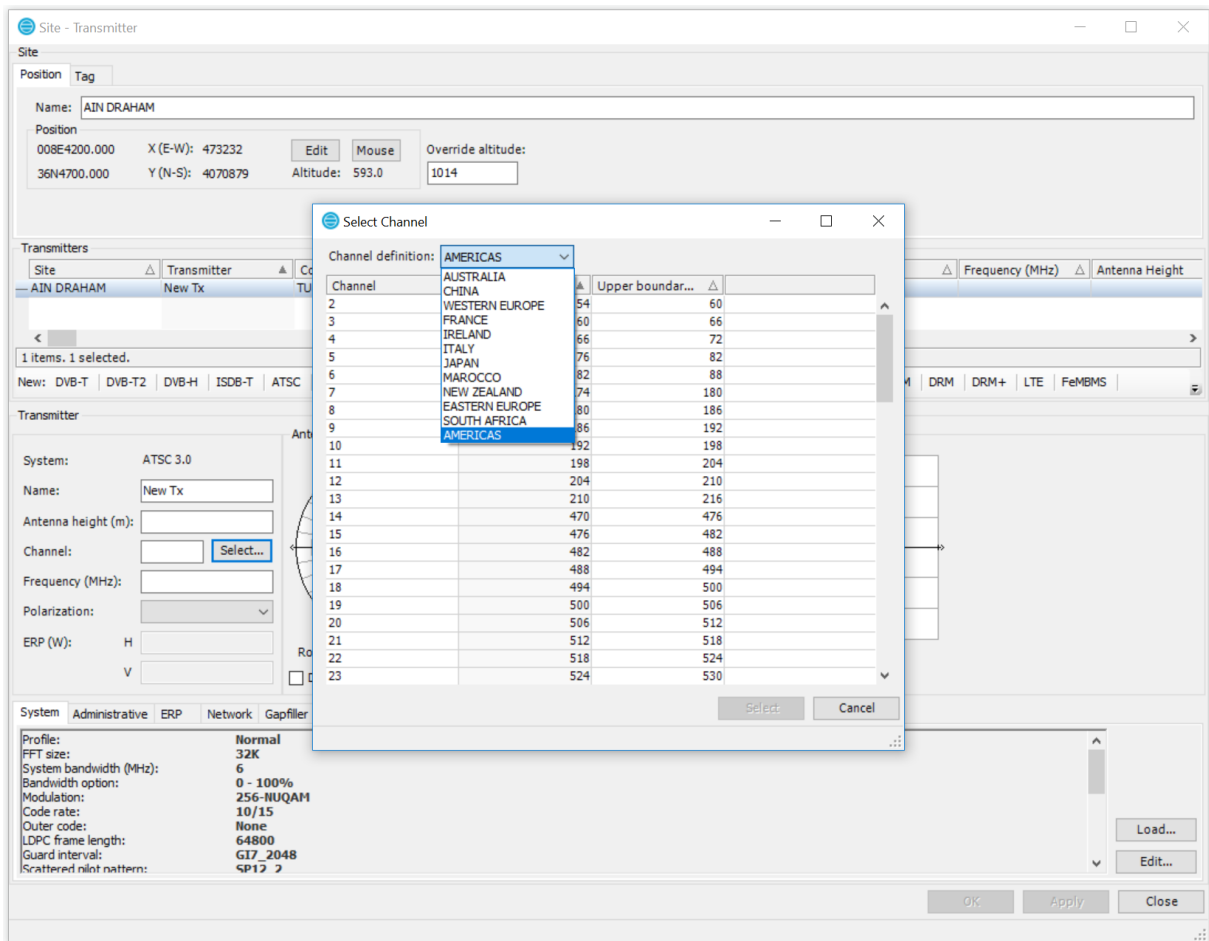
FIXED: Features (polygons, lines, points, etc.) on both sides of longitude 90 degrees west are now shown properly.

2.2 Job list

FIXED: The order of jobs is now saved.

2.3 Tx

NEW: Added different channeling support for ATSC 3.0 transmitter. Earlier versions only supported the AMERICAS channel list.



2.4 Export to ITU format

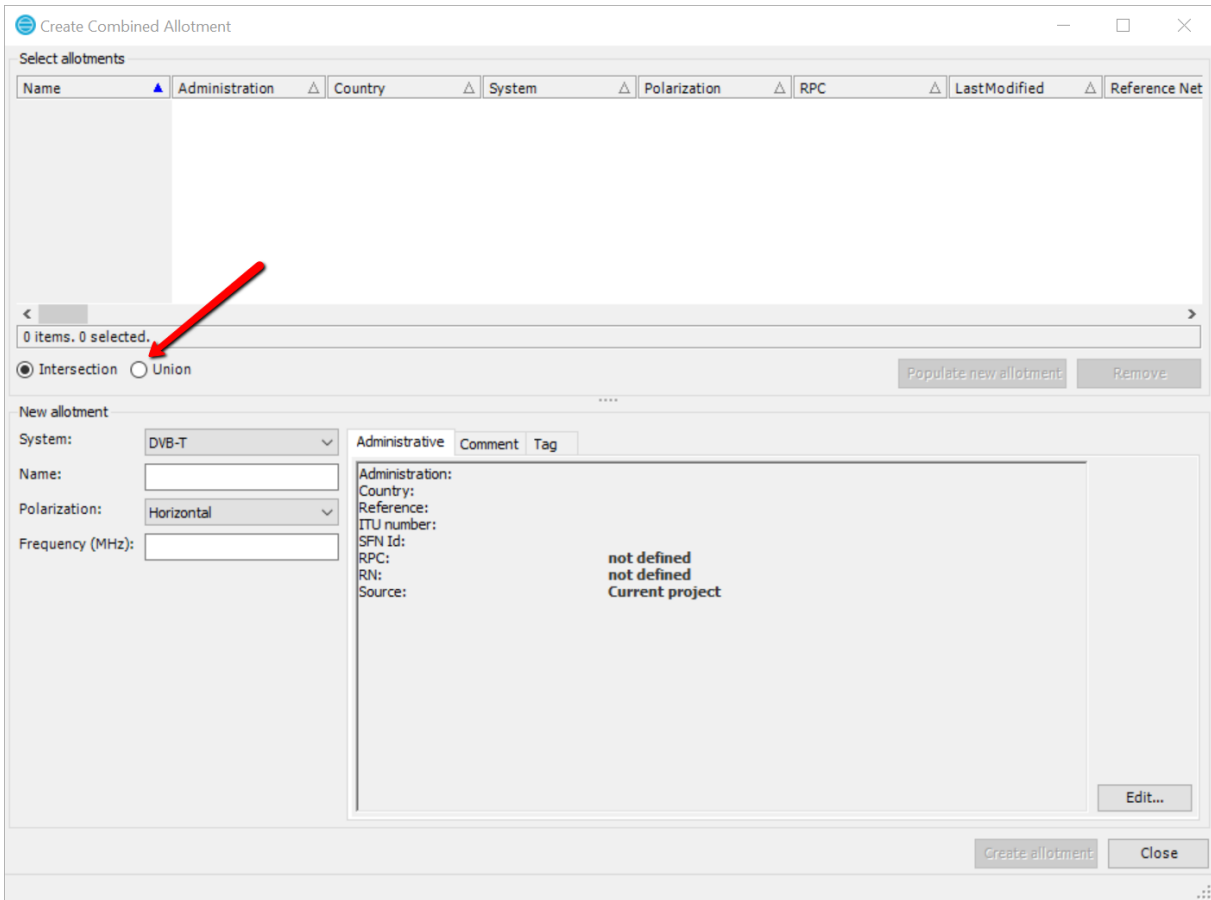
CHANGED: The attenuation in the exported antenna diagram is normalized to 0 dB by adjusting the ERP value.

2.5 Create distance contour

CHANGED: The layer created can now be used as a mask in a population/area coverage calculation. The geometric type had to be changed to a format that requires an azimuth step resolution to be set. The default azimuth step resolution can be set in PROGIRA® plan Settings under Distance contour section.

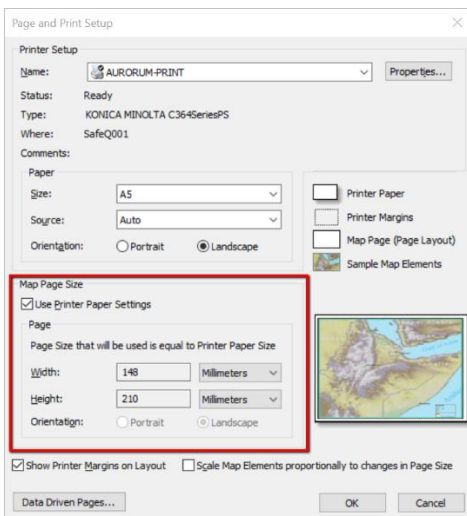
2.6 Allotments/SFN

NEW: It is now possible to create a common allotment which is the union of all input allotments. The function aims to simplify the planning of shared site SFN.



2.7 Layout view

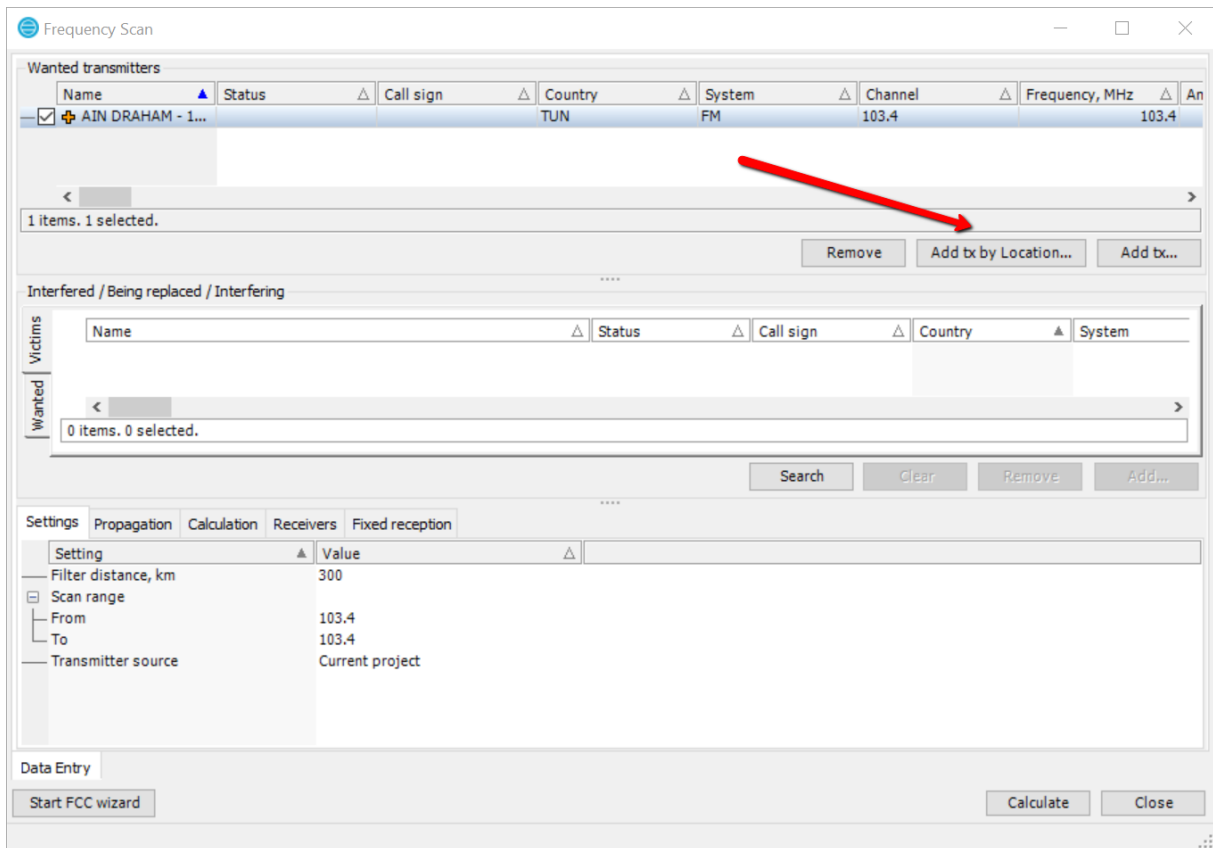
CHANGED: The page size of the PROGIRA® plan layout is now defined by the page setting parameters in the ArcMAP Page and Print Setup. All units are also supported.



3 Frequency planning module

3.1 Frequency scan

FIXED: Buttons managing wanted transmitters were missing in version 7.0.0.



4 Network planning module

4.1 ATSC sum

FIXED: The noise floor has been corrected. In previous versions, the probability values calculated were too high.